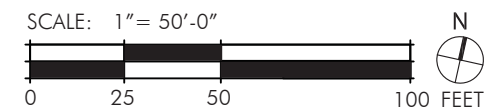


© 2016 Torti Gallas Urban, Inc. | 1326 H Street NE 2nd Floor Washington, DC 20002

OVERALL ILLUSTRATIVE PLAN

PARK VIEW COMMUNITY PARTNERS

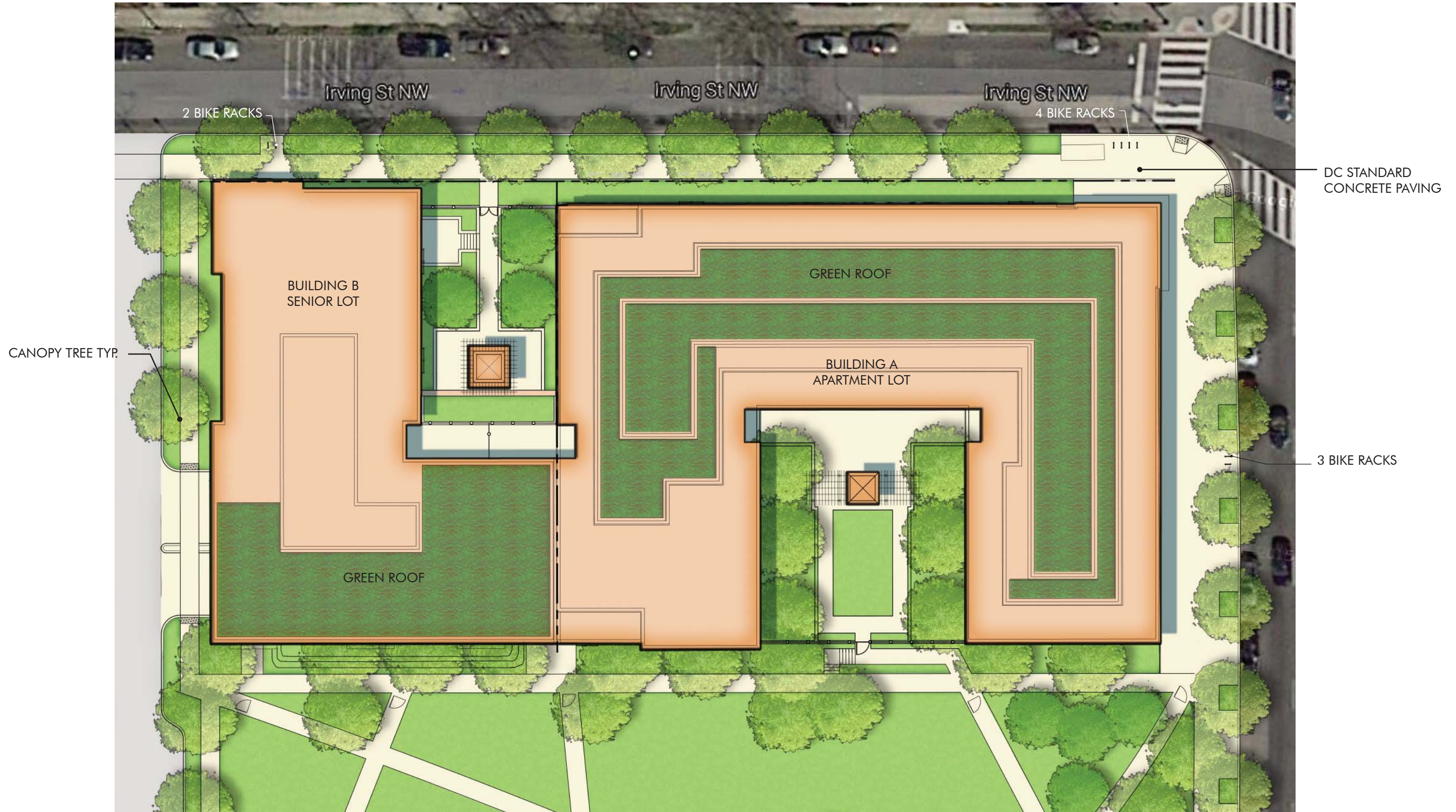


November 14, 2016

L01

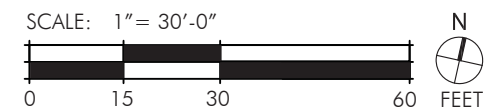


BRUCE MONROE
 ZONING COMMISSION
 District of Columbia
 CASE NO. 16-41
 EXHIBIT NO. 35A6



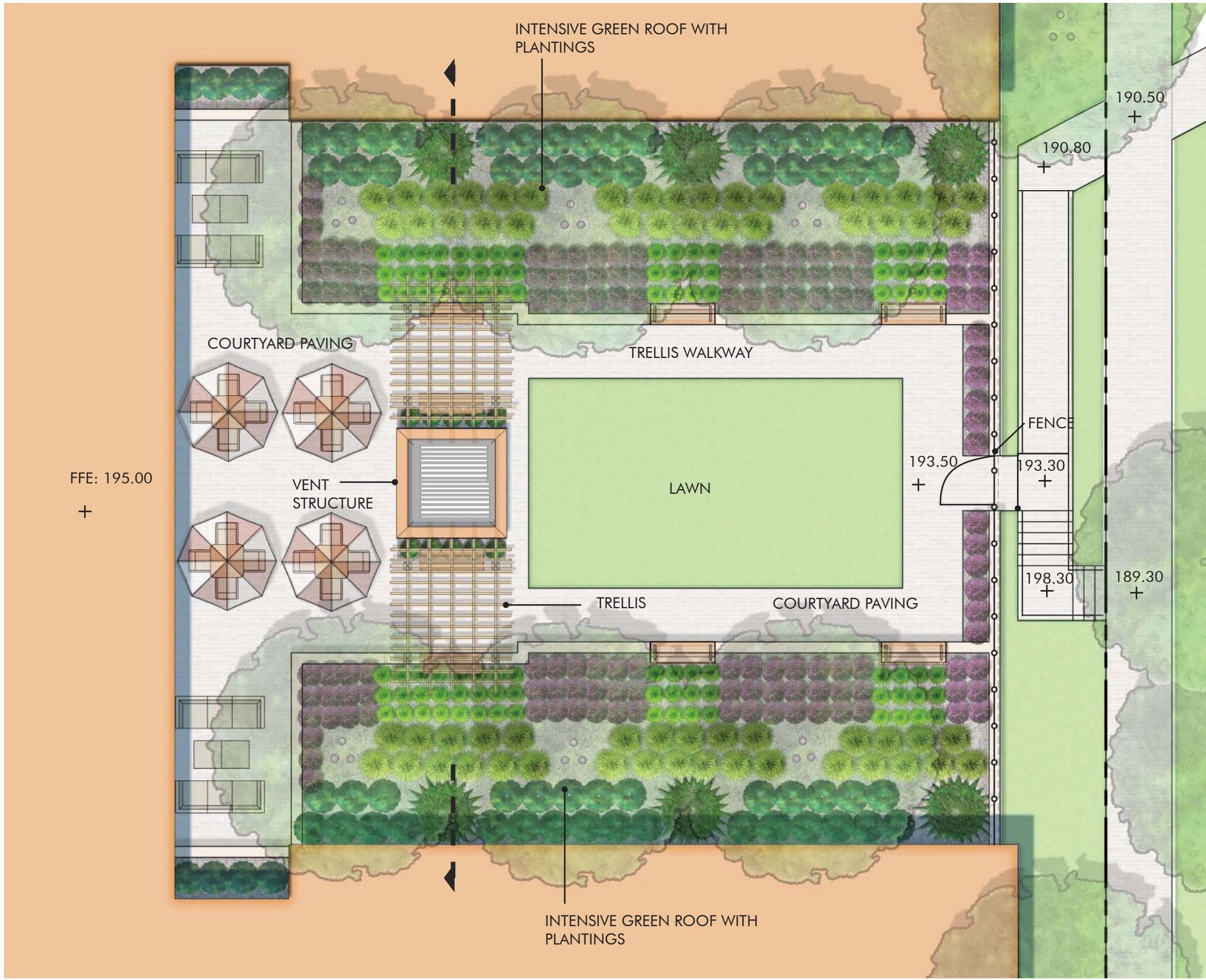
© 2016 Torti Gallas Urban, Inc. | 1326 H Street NE 2nd Floor Washington, DC 20002

BUILDING A & B LANDSCAPE PLAN
 PARK VIEW COMMUNITY PARTNERS



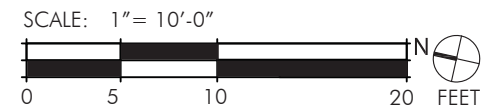
November 14, 2016

L02



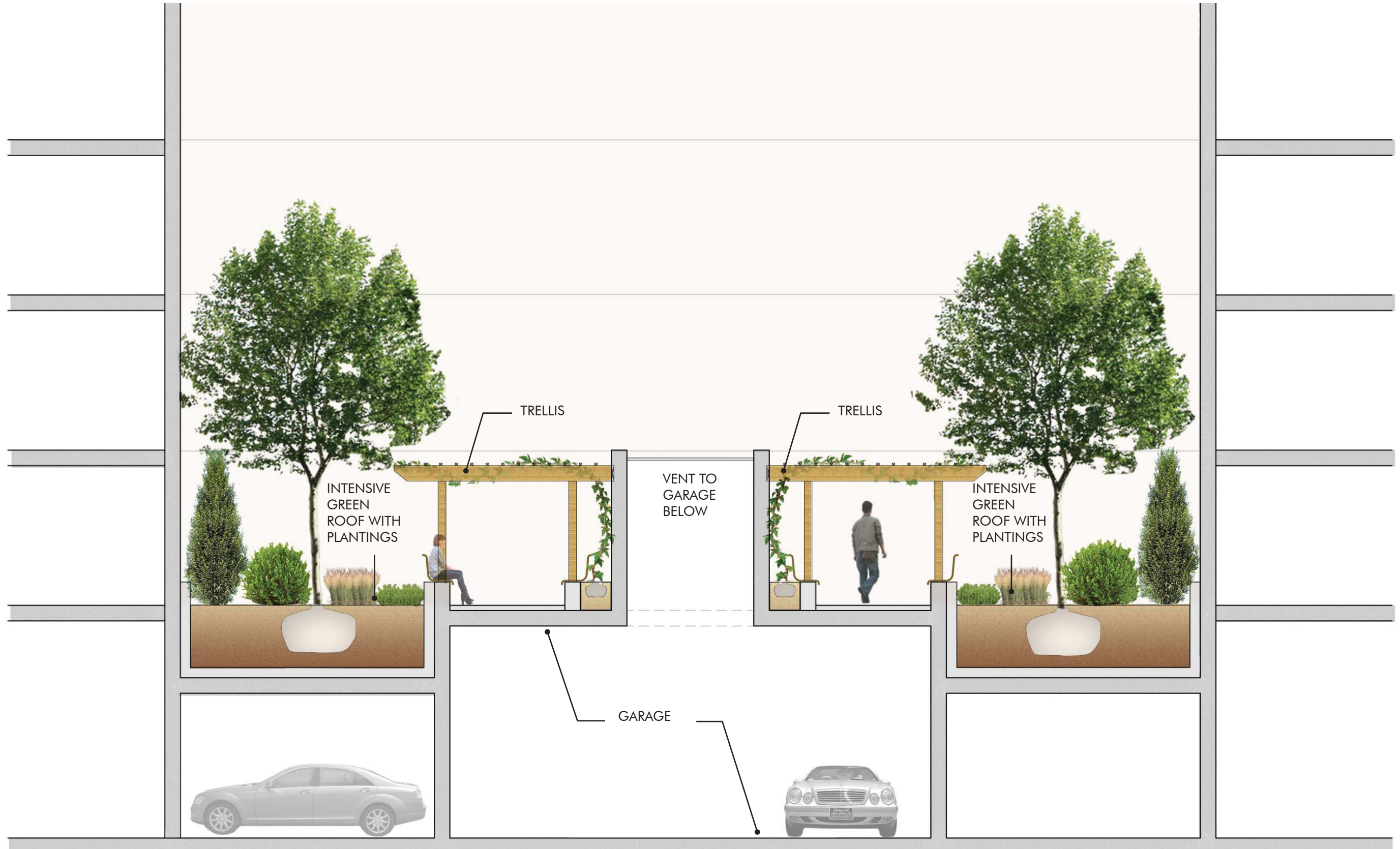
© 2016 Torti Gallas Urban, Inc. | 1326 H Street NE 2nd Floor Washington, DC 20002

ENLARGED BLDG A COURTYARD PLAN
 PARK VIEW COMMUNITY PARTNERS



November 14, 2016

L03



© 2016 Torti Gallas Urban, Inc. | 1326 H Street NE 2nd Floor Washington, DC 20002

BLDG A COURTYARD SECTION
 PARK VIEW COMMUNITY PARTNERS

SCALE: 3/16" = 1'-0"



November 14, 2016

L04



The Community Builders, Inc.



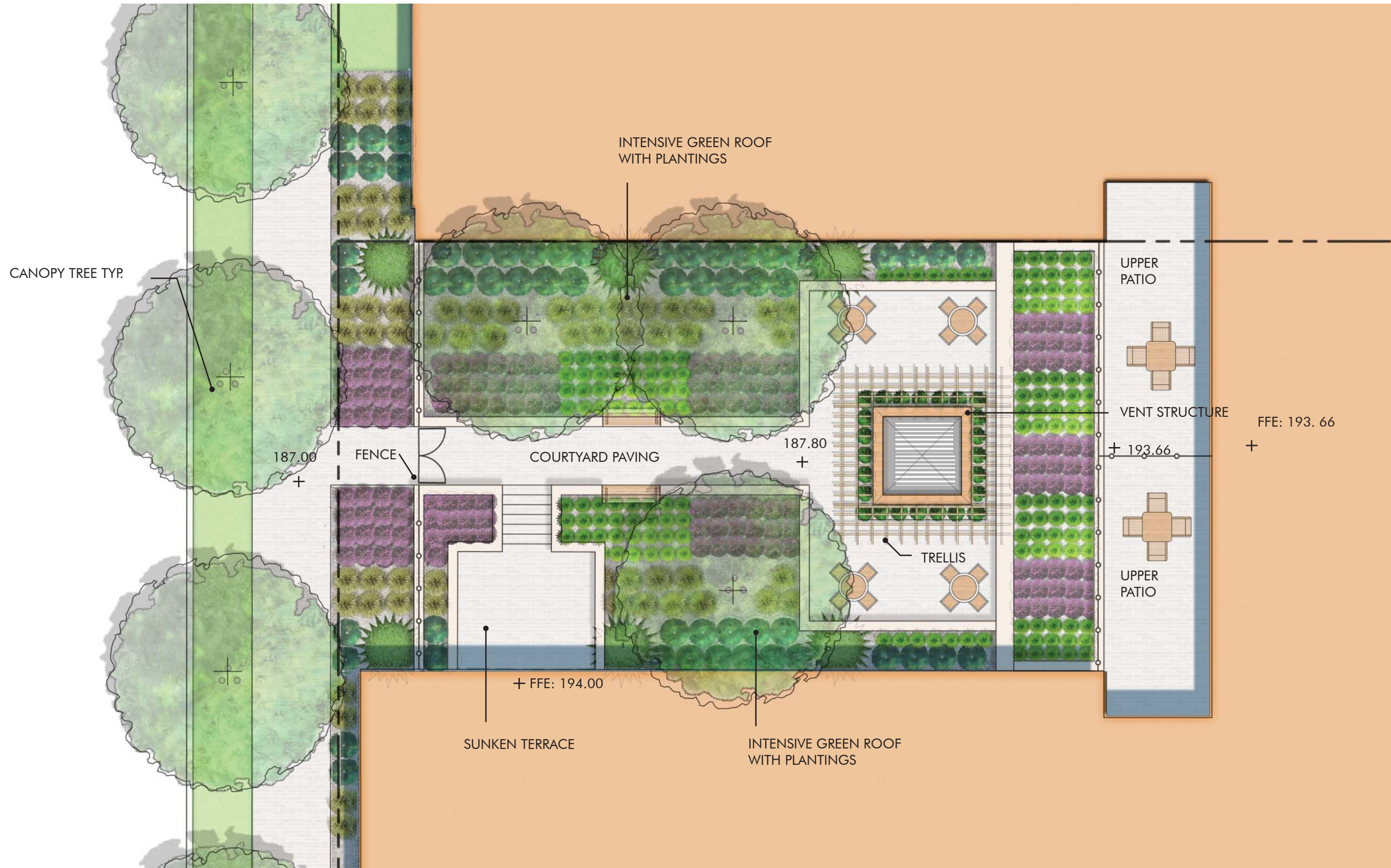
DANTES PARTNERS



TORTI GALLAS URBAN

PARKER RODRIGUEZ, INC.
 Planning | Urban Design | Landscape Architecture

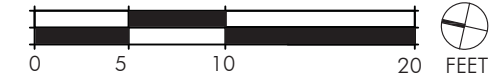
BRUCE MONROE



© 2016 Torti Gallas Urban, Inc. | 1326 H Street NE 2nd Floor Washington, DC 20002

ENLARGED BLDG B COURTYARD PLAN
PARK VIEW COMMUNITY PARTNERS

SCALE: 1" = 10'-0"

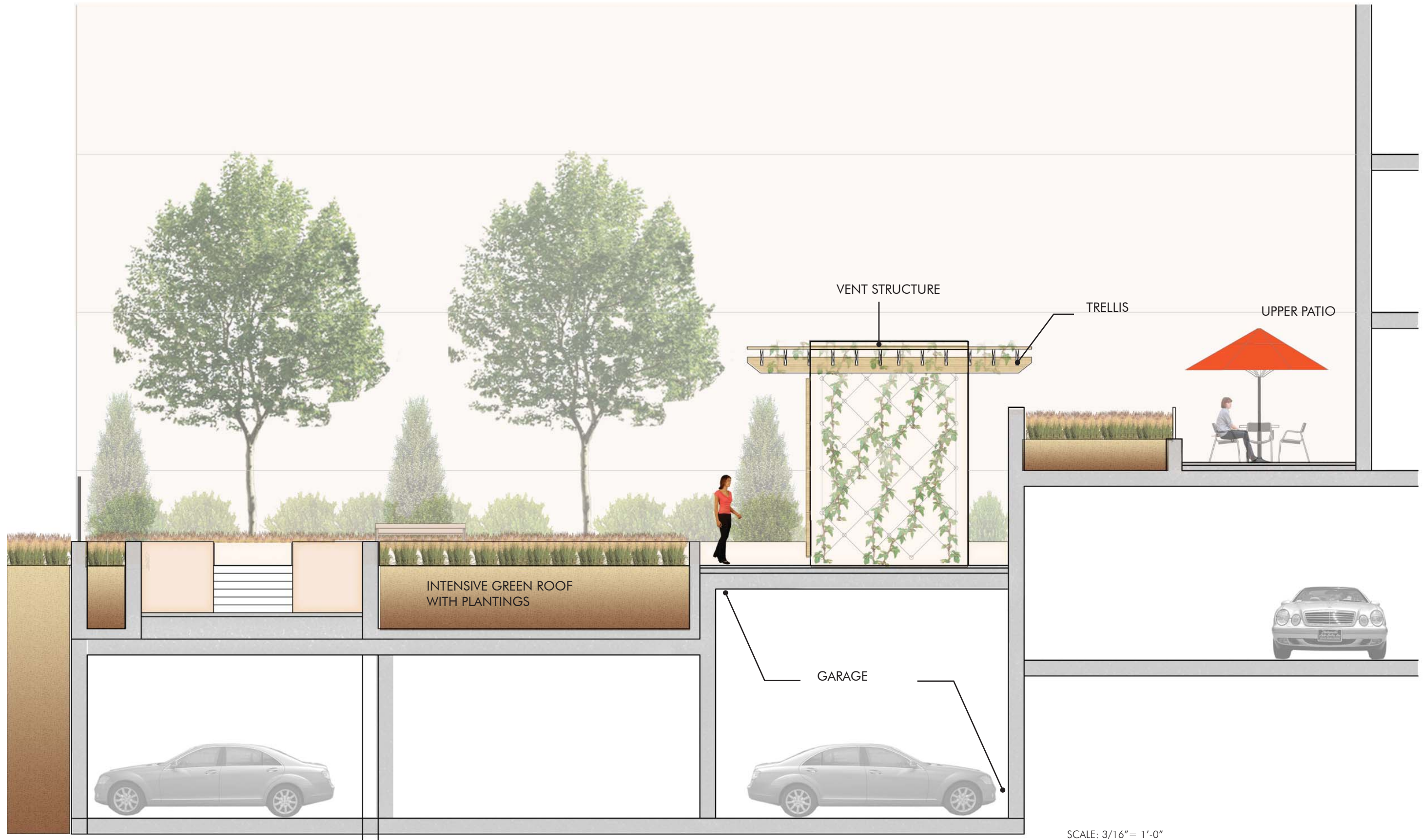


November 14, 2016

L05



BRUCE MONROE



© 2016 Torti Gallas Urban, Inc. | 1326 H Street NE 2nd Floor Washington, DC 20002

BLDG B COURTYARD SECTION

PARK VIEW COMMUNITY PARTNERS

SCALE: 3/16" = 1'-0"

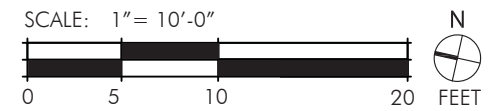
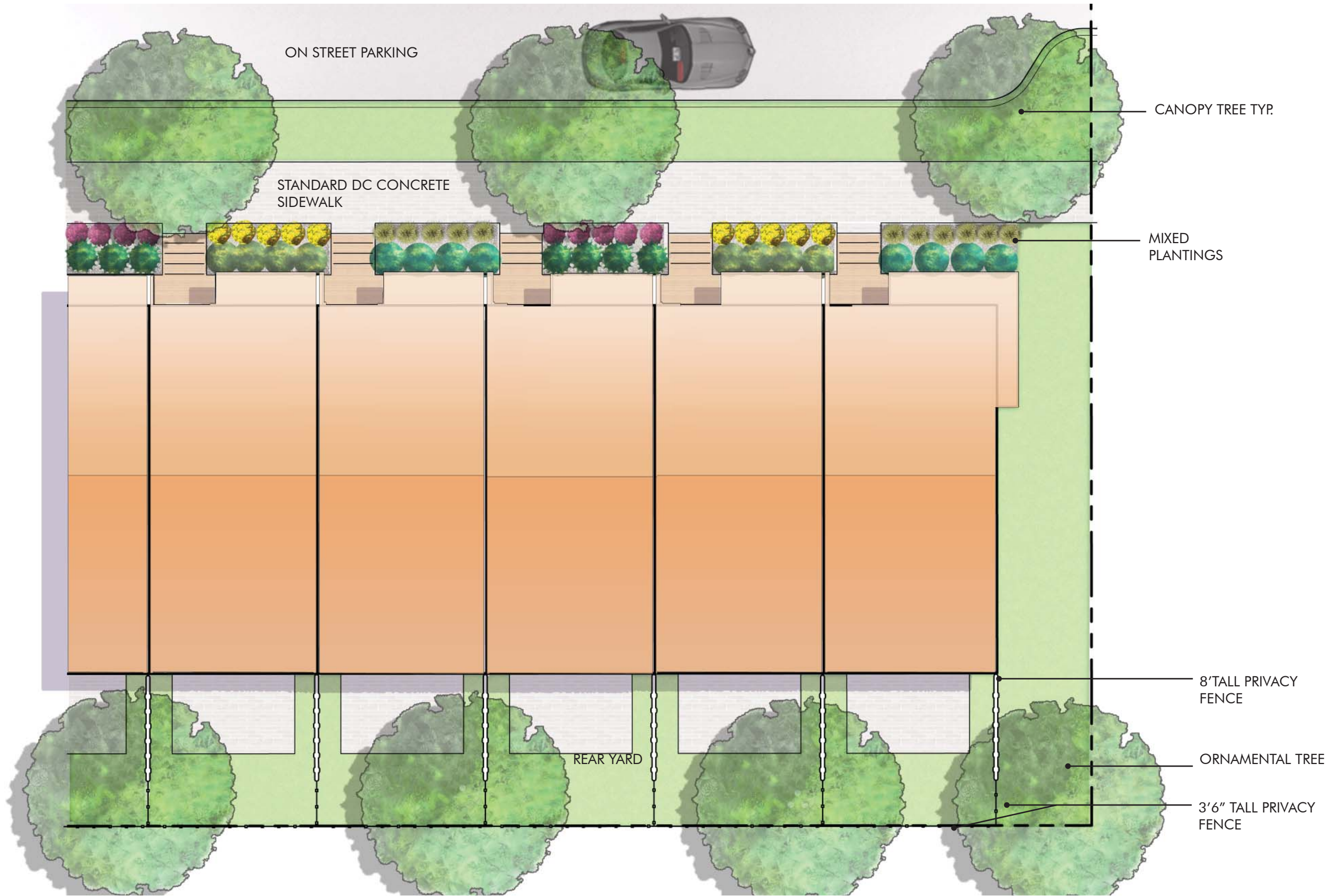


November 14, 2016

L06



BRUCE MONROE



November 14, 2016

TYPICAL TOWNHOUSE LANDSCAPE ENLARGEMENT PLAN

PARK VIEW COMMUNITY PARTNERS



BRUCE MONROE



CANOPY TREES



MIXED PLANTINGS



DC STANDARD CONCRETE PAVING



ORNAMENTAL TREE



GREEN ROOF



COURTYARD PAVING



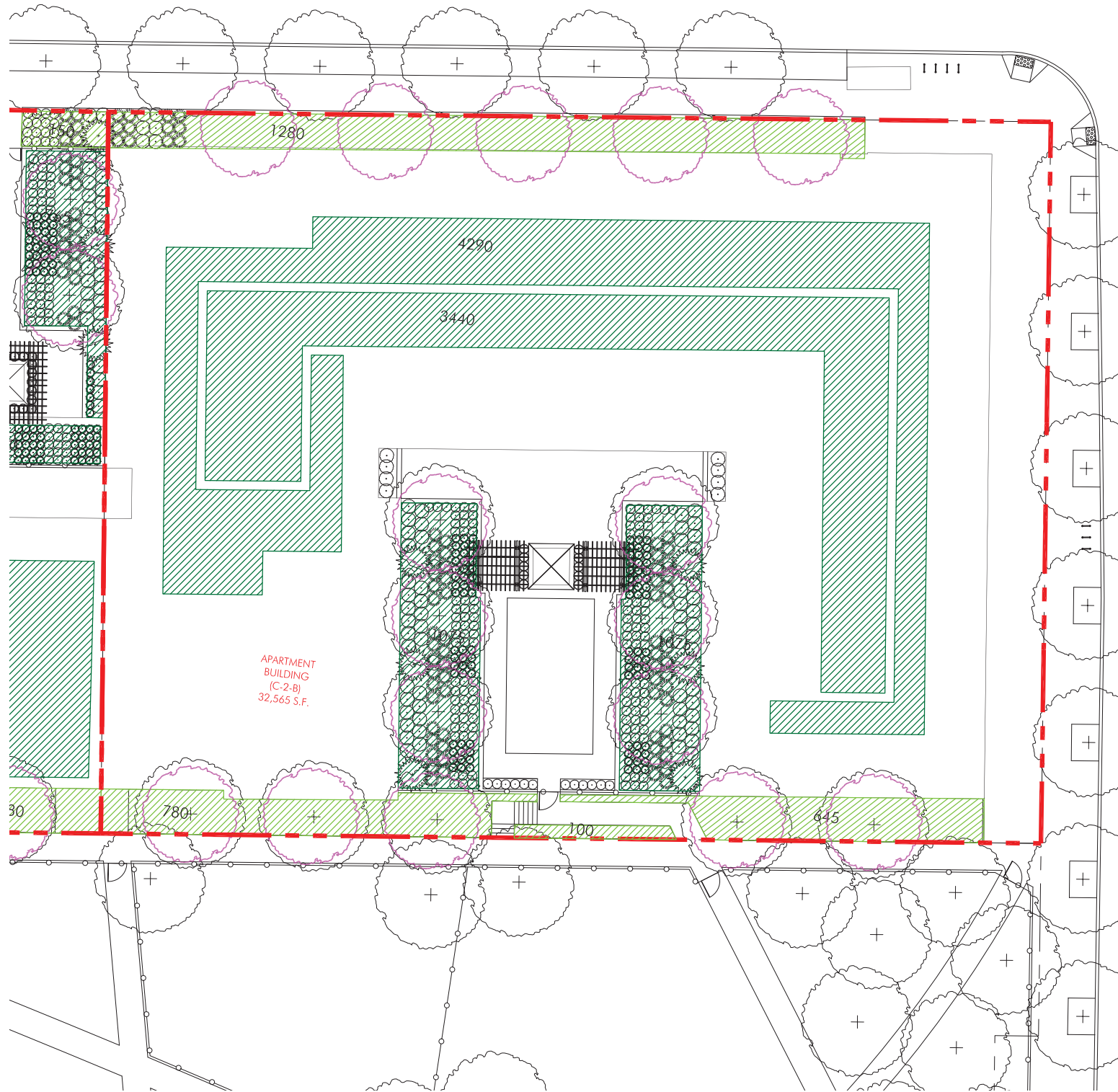
INTENSIVE GREEN ROOF WITH PLANTINGS










WOOD 8' TALL PRIVACY FENCE

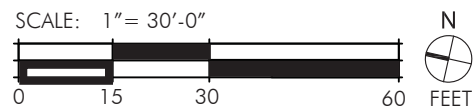


WOOD 3'6" TALL PRIVACY FENCE

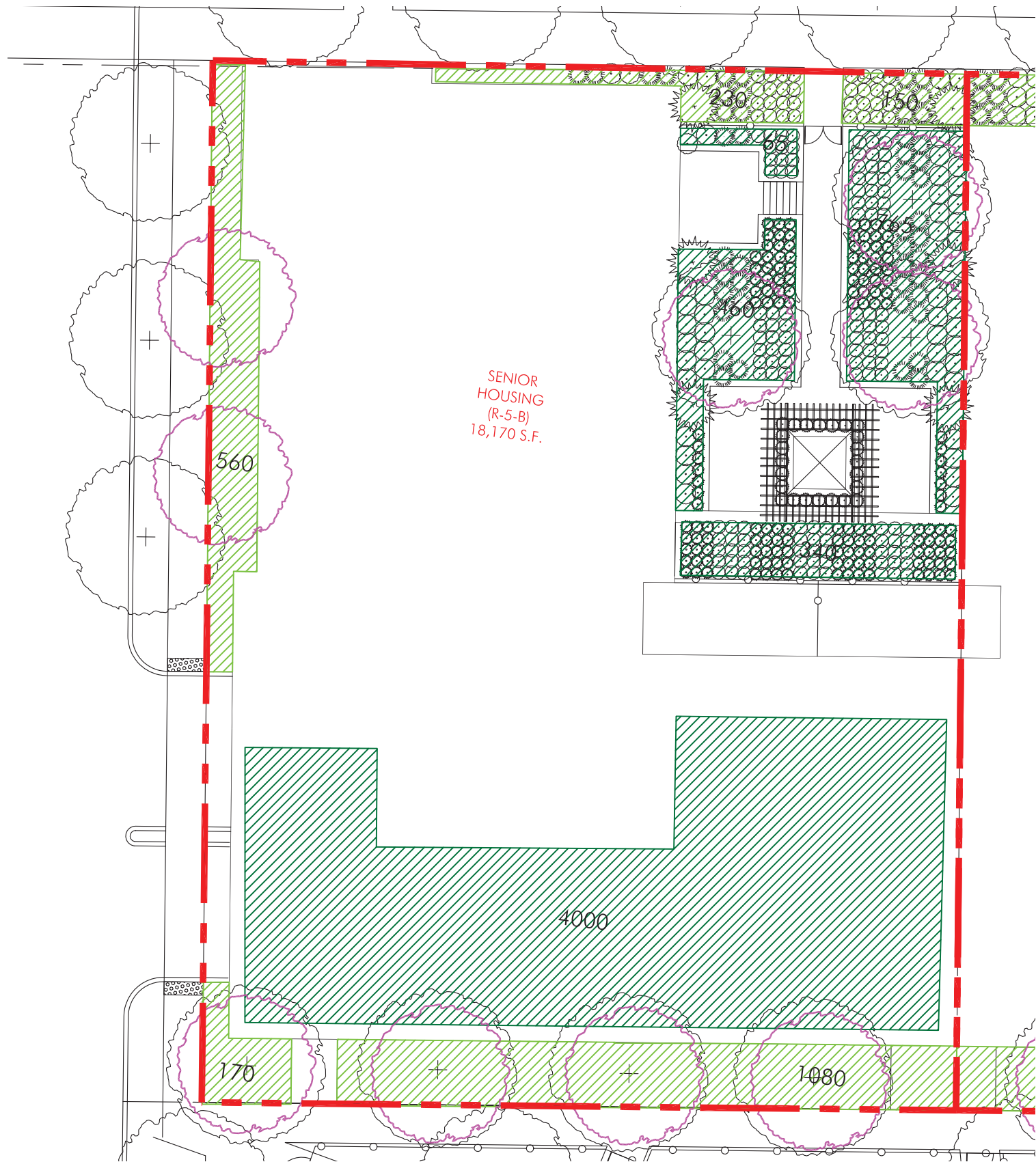


REQUIRED GAR: 0.300
PROPOSED GAR: 0.309

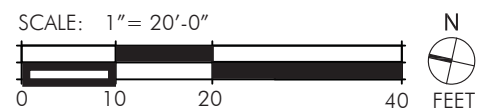
-  LOT LINE
-  2.5" CAL TREES
-  24" SOIL WITH SHRUBS
-  LAWN / GROUNDCOVER
-  PERMEABLE PAVING
-  BIORETENTION WITH PLANTINGS
-  GREEN ROOF



Green Area Ratio Scoresheet		Word	Lot	Square	Zoning District
Address: Bruce Monroe - Apartment Lot					C-2-B
Other / RZA Order:		enter sq ft of lot		multipl	SCORE
Lot size (enter this value first) *		32,565			0.309
Landscape Elements		Square Ft.	Factor	Total	
A Landscaped areas (select one of the following for each area)					
1	Landscaped areas with a soil depth of less than 24"	enter sq ft 0	0.3	-	
2	Landscaped areas with a soil depth of 24" or greater	enter sq ft 2,805	0.6	1,683.0	
3	Bioretention facilities	enter sq ft 0	0.4	-	
B Plantings (credit for plants in landscaped areas from Section A)					
1	Groundcovers, or other plants less than 2' tall at maturity	enter sq ft 0	0.2	-	
2	Plants, not including grasses, 2' or taller at maturity - calculated at 9 sq ft per plant (typically planted no closer than 18" on center)	enter number of plants 550	4950	0.3	1,485.0
3	Tree canopy for all new trees 2.5" to 6" diameter or equivalent - calculated at 50 sq ft per tree	enter number of trees 16	800	0.5	400.0
4	Tree canopy for new trees 6" diameter or larger or equivalent - calculated at 250 sq ft per tree	enter number of trees 0	0	0.6	-
5	Tree canopy for preservation of existing tree 6" to 12" diameter or larger or equivalent - calculated at 250 sq ft per tree	enter number of trees 0	0	0.7	-
6	Tree canopy for preservation of existing tree 12" to 18" diameter or larger or equivalent - calculated at 600 sq ft per tree	enter number of trees 0	0	0.7	-
7	Tree canopy for preservation of all existing trees 18" to 24" dia. or equivalent - calculated at 1300 sq ft per tree	enter number of trees 0	0	0.7	-
8	Tree canopy for preservation of all existing trees 24" diameter or larger or equivalent - calculated at 2000 sq ft per tree	enter number of trees 0	0	0.8	-
9	Vegetated wall, plantings on a vertical surface	enter sq ft 0	0.6	-	
C Vegetated or "green" roofs					
1	Over at least 2" and less than 8" of growth medium	enter sq ft 9,880	0.6	5,928.0	
2	Over at least 8" of growth medium	enter sq ft 0	0.8	-	
D Permeable Paving***					
1	Permeable paving over at least 6" and less than 24" of soil or gravel	enter sq ft 0	0.4	-	
2	Permeable paving over at least 24" of soil or gravel	enter sq ft 0	0.5	-	
E Other					
1	Enhanced tree growth systems***	enter sq ft 0	0.4	-	
2	Renewable energy generation	enter sq ft 0	0.5	-	
3	Approved water features	enter sq ft 0	0.2	-	
H Bonuses		sub-total of sq ft = 18,435			
1	Native plant species	enter sq ft 5,750	0.1	575.0	
2	Landscaping in food cultivation	enter sq ft 0	0.1	-	
3	Harvested stormwater irrigation	enter sq ft 0	0.1	-	
		Green Area Ratio numerator =		10,071	
*** Permeable paving and structural soil together may not qualify for more than one third of the Green Area Ratio score. Total square footage of all permeable paving and enhanced tree growth					



- LOT LINE
- 2.5" CAL TREES
- 24" SOIL WITH SHRUBS
- LAWN / GROUNDCOVER
- PERMEABLE PAVING
- BIORETENTION WITH PLANTINGS
- GREEN ROOF



Green Area Ratio Scoresheet				
Ward	Lot	Square	Zoning District	
3	Bruce Monroe - Senior Lot		R-5-B	
Other / BZA Order		enter sq ft of lot	multipl	
		18,170		SCORE 0.419
Landscape Elements				
		Square Ft.	Factor	Total
A Landscaped areas (select one of the following for each area)				
1	Landscaped areas with a soil depth of less than 24"	enter sq ft 0	0.3	-
2	Landscaped areas with a soil depth of 24" or greater	enter sq ft 2,190	0.6	1,314.0
3	Bioretention facilities	enter sq ft 0	0.4	-
B Plantings (credit for plants in landscaped areas from Section A)				
1	Groundcovers, or other plants less than 2' tall at maturity	enter sq ft 0	0.2	-
2	Plants, not including grasses, 2' or taller at maturity - calculated at 9 sq ft per plant (typically planted no closer than 18" on center)	enter number of plants 424	3816 0.3	1,144.8
3	Tree canopy for all new trees 2.5" to 6" diameter or equivalent - calculated at 50 sq ft per tree	enter number of trees 9	450 0.5	225.0
4	Tree canopy for new trees 6" diameter or larger or equivalent - calculated at 250 sq ft per tree	enter number of trees 0	0 0.6	-
5	Tree canopy for preservation of existing tree 6" to 12" diameter or larger or equivalent - calculated at 250 sq ft per tree	enter number of trees 0	0 0.7	-
6	Tree canopy for preservation of existing tree 12" to 18" diameter or larger or equivalent - calculated at 600 sq ft per tree	enter number of trees 0	0 0.7	-
7	Tree canopy for preservation of all existing trees 18" to 24" dia. or equivalent - calculated at 1300 sq ft per tree	enter number of trees 0	0 0.7	-
8	Tree canopy for preservation of all existing trees 24" diameter or larger or equivalent - calculated at 2000 sq ft per tree	enter number of trees 0	0 0.8	-
9	Vegetated wall, plantings on a vertical surface	enter sq ft 0	0.6	-
C Vegetated or "green" roofs				
1	Over at least 2" and less than 8" of growth medium	enter sq ft 0	0.6	-
2	Over at least 8" of growth medium	enter sq ft 5,630	0.8	4,504.0
D Permeable Paving***				
1	Permeable paving over at least 6" and less than 24" of soil or gravel	enter sq ft 0	0.4	-
2	Permeable paving over at least 24" of soil or gravel	enter sq ft 0	0.5	-
E Other				
1	Enhanced tree growth systems***	enter sq ft 0	0.4	-
2	Renewable energy generation	enter sq ft 0	0.5	-
3	Approved water features	enter sq ft 0	0.2	-
		sub-total of sq ft = 12,086		
H Bonuses				
1	Native plant species	enter sq ft 4,266	0.1	426.6
2	Landscaping in food cultivation	enter sq ft 0	0.1	-
3	Harvested stormwater irrigation	enter sq ft 0	0.1	-
		Green Area Ratio numerator = 7,614		
*** Permeable paving and structural soil together may not qualify for more than one third of the Green Area Ratio score.				
		Total square footage of all permeable paving and enhanced tree growth		